

School Improvement Plan

A bald eagle is shown in flight, wings spread wide, against a background of a bright, cloudy sky. The eagle is positioned centrally, with its head turned slightly to the left. The overall tone is bright and positive.

Evergreen Elementary “Where Eagles SOAR”

Presentation to the Peninsula School Board

January 12, 2017

Evergreen Demographics



- **255 Students K-5**
 - **1 ECEAP Preschool**
 - **1 CO-OP Preschool**
- **Schoolwide Title I Building**
- **LAP K-4**
- **Comprehensive Communities In Schools Site**
- **Free/Reduced Lunch 65%**

Data – A Multi-Year Look

Where We Have Been, Where We Are Now

E L A	Grade Level	2015 EES Proficient	2015 State Proficient	2016 % Proficient	2016 State Proficient	2016 SGP
	3rd	45.7	52	51.2	54	NA
	4th	61.1	55	42.4	57	48.5
	5th	50	58	60	60	55

M A T	Grade Level	2015 % Proficient	2015 State Proficient	2016 % Proficient	2016 State Proficient	2016 SGP
	3rd	40	57	48.7	59	NA
	4th	66.6	54	45.4	55	67
	5th	45.2	48	54.8	49	42

S C	Grade Level	2015 % Proficient	2015 State Proficient	2016 % Proficient	2016 State Proficient
	5th	64.2	63.4	80.6	65.3

SMART Goals



ELA

- ✧ **By June 2017, Evergreen students will make an average of 8 months growth in reading as measured by the Fountas and Pinnell Assessment.**
- ✧ **By June 2017, Evergreen's Average Growth Percentile (AGP) will be equal to or greater than the State AGP as measured by the 2016-2017 ELA Smarter Balance Assessment.**

Math

- ✧ **By June 2017, a minimum of 80% of Evergreen students will be proficient on the grade level math computation as measured by the District Common Core Computation Assessment.**
- ✧ **By June 2017, Evergreen's Average Growth Percentile (AGP) will be equal to or greater than the State AGP as measured by the 2016-2017 Math Smarter Balance Assessment.**

Engagement –

Strategies to Engage Learners

ELA, Math, Cross Curricular

✧ **Project/Problem/STEAM-Based**

✧ **Hands-on**

✧ **Personal Response/Connection**

✧ **Choice/Voice**

✧ **Collaborative**

✧ **Small Group**



Assessment –

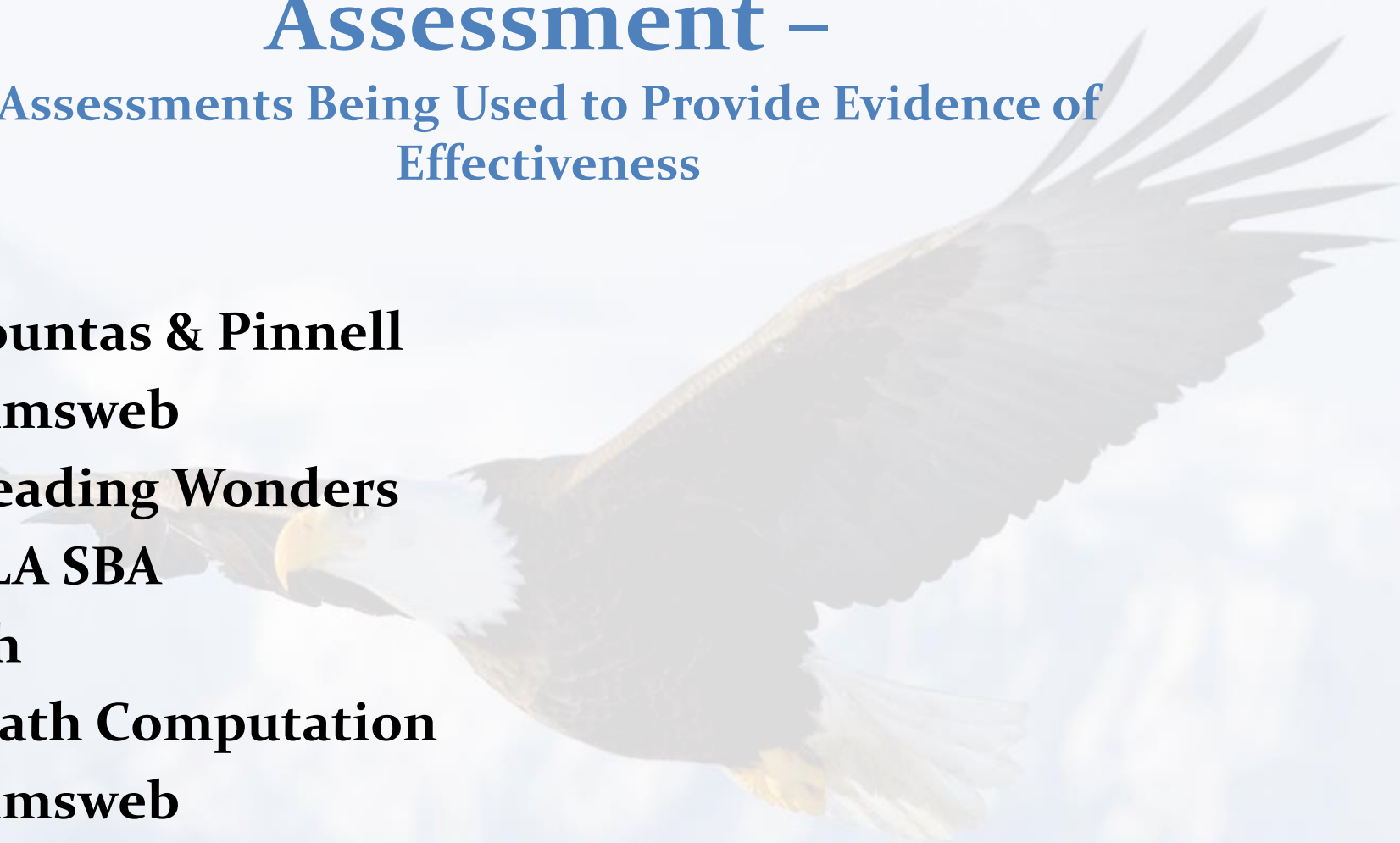
Assessments Being Used to Provide Evidence of Effectiveness

ELA

- ✧ **Fountas & Pinnell**
- ✧ **Aimsweb**
- ✧ **Reading Wonders**
- ✧ **ELA SBA**

Math

- ✧ **Math Computation**
- ✧ **Aimsweb**
- ✧ **Envisions**
- ✧ **Math SBA**



Collaboration –

Working Together to Improve Student Outcomes

Grade Level PLC

- ✧ Essential Learnings
- ✧ Student Growth
- ✧ RTI
- ✧ PBL/STEAM/Literacy- Joy Giovanini

Other PLC

- ✧ STEM Conference- July
- ✧ Frameworks- July/August
- ✧ PBL Training- BPD Day
- ✧ Outdoor Learning Environment Committee

Strategies/Action Plans



Tier One Interventions for ALL students

Teach comprehension strategies and skills based on Common Core Standards using available resources

Tier Two Interventions for SOME students

Provide small group instruction based on individual student needs

Tier Three Interventions for FEW students

Provide interventions based on the RTI Model for targeted students

Tier Four Interventions for IDENTIFIED students

Specially Designed Instruction, Highly Capable Opportunities, SST, Referral for SpEd or HC assessment

Summary



- **Engagement through PBL/STEAM**
- **Outdoor Learning Environment**
- **Grant Funding**
 - **STEM Kits**
 - **Integrated Literacy/Science Resources**
 - **Rigamajig**
 - **Sensory Resources**
- **Trauma Informed Practices/Social Skill Support**
- **SIP Team**
 - **Jennifer Martin, Beth Porter, Susan Brummitt, Susan Henderson, Julie Kreis, Betty McCord, Hugh Maxwell**